



The Royal School

Wolverhampton

Year 1

Curriculum Document
for Parents



2024 - 2025

Important Information

Class Teachers:

1TS: [Miss T Smith \(Year 1 and 2 Phase Lead\)](#)

1SB: [Miss S Buttery](#)

1GB: [Ms G Brown](#)

Higher Level Teaching Assistant: [Miss E Shaw and Mrs S Mountford](#)

Teaching assistants:

[Mrs M Ladher, Mrs S Begum, Miss E Bennett, Mrs L Cresswell, Ms R Dhesi](#)

Should you wish to contact the teachers at any time regarding your child, please follow our communication pathway:

- An informal conversation at dismissal should be the first port of call. Most issues can be satisfactorily resolved in this manner.
- If an in-person conversation cannot take place at that time, email primaryreception@theroyal.school to outline the issue of concern.
- Telephone 01902 349100 to arrange an appointment to see the class teacher or relevant member of staff.

Please direct any emails for class teachers to:

primaryreception@theroyal.school

We will endeavour to respond to your emails within 24 hours. However, on some occasions this may take a little longer.

If your child is unwell and cannot attend school, you must ring the school reception before 8:30am. Please do not email.

All general enquiries should be sent to: primaryreception@theroyal.school

01902 349100



Welcome to Year 1

In this booklet we will provide you with the relevant information on your child's:

- School Values
- Timetable
- Reading
- Reports
- Rewards and sanctions
- Curriculum
- Sport/Homework
- Trips
- Contacts

School Values

- Trust
- Respect
- Initiative
- Community
- Risk

Primary School Rap

Trust, Respect, Initiative

Be Community,

Take a Risk to be the best,

The Royal's the place to be.

Word!

Key points for September in Year 1

Drop off and collection

Before school your child will need to be dropped at the gates into school. From Year 1, parents do not accompany children up the paths. Parents are not permitted to enter the playground or walk across the playground to access the school reception. If you would like to speak to a member of staff, you must go round to the main school reception. Please do not cut through the Early Years' playground or leave messages with Early Years' staff, which may not be passed on until later in the day. After school, your child can be collected from outside their classroom.

Sport Timetable

Swimming – **Friday** (children to wear their P.E. kits to school and bring swimming kit in drawstring bag)

P.E. – **Monday** (wear P.E. kit to school)



Unless requested otherwise, your child only needs their P.E. kit and swimming kit on the specified days.

If you have any queries regarding physical education, please contact Mr Berry, Mr Richardson or Mr Dorey via primaryreception@theroyal.school

Spare Clothes!

Accidents do happen, so please ensure that your child has spare named pants and uniform to keep in school.

Curriculum

What is it like to be a learner in Year 1 at The Royal?

Learning in Year 1 at The Royal is full of exciting exploration, discovery, and achievement. We believe that children have a right to expect a learning environment, which is appropriate to their stage of development. Research and our own school experience tells us that young children learn best through play and exploration which is why initially we develop the Continuous Provision based approach they are already familiar with from Reception.

Every day our children get the opportunity to become artists, writers, mathematicians, scientists, designers, storytellers, athletes and much, much more! We believe that the EYFS Characteristics of Effective Learning (CoEL) are fundamental to ALL children. It does not stop when our children reach Key Stage 1 (KS1), we ensure it continues and develops, so that our children become confident, independent, motivated, and critical thinkers.

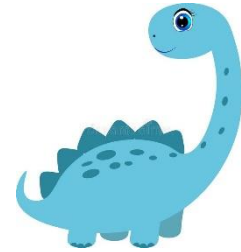
At The Royal, we also use Cornerstones for our curriculum which incorporate different subjects such as English, Science, Geography, History, Art, D&T and Music.

How the EYFS curriculum converts to the National Curriculum in Year 1

Early Years Foundation Stage	KS1 National Curriculum
Personal, social and emotional development	Personal, social and health education and citizenship
Communication and language Literacy	English
Mathematics	Maths
Understanding the world	Science, history, geography, ICT, design and technology, religious education
Physical development	Physical education
Expressive art and design	Music and art

The Year 1 topics are:

- Autumn 1: Superheroes!
- Autumn 2: Bright Lights, Big City
- Spring 1: Moon Zoom
- Spring 2: Dinosaur Planet
- Summer 1: Paws, Claws and Whiskers
- Summer 2: Rio De Vida



Year 1 Timetable

	8:30-9:00	Session 1 9:00-10:15		Break 10:15-10:30	Session 2 10:30-12:00		Lunch 12:00-13:00	Session 3 13:00-13:30	Session 4 13:30-15:30	
Monday	Leap into Learning	Phonics 8:45-9:10	Assembly 09:15-09:45		English 10:30-11:00	Maths 11:00-12:00		Reading and Phonics	PE 1:30-3:30	
Tuesday	Leap into Learning	Phonics 9:30-9:30			Maths 10:30-11:30	Guided Reading 11:30-12:00		Reading and Phonics	Cornerstones	
Wednesday	Leap into Learning	Phonics 9:30-9:30			Maths 10:30-11:30	Guided Reading 11:30-12:00		Reading and Phonics	Cornerstones	
Thursday	Leap into Learning	Phonics 9:30-9:30			Maths 10:30-11:30	Guided Reading 11:30-12:00		Reading and Phonics	Cornerstones	
Friday	Leap into Learning	English 8:45-9:30	Singing 9:30-10:00		Maths 10:30-11:30	Circle time 11:30-12:00		RE/PSHE 13:00-14:00	Swimming 14:00-15:30	Music 15:00-15:30

How can I help my child at home?

Through this vibrant and dynamic curriculum, we aim to inspire the children to become self-motivated learners, to enable them to reach their full potential. Learning is not just about academic success and should not stop at the end of lessons or a school day and so family outings and personal interests are to be encouraged. We will give the children opportunities to share their interests and experiences with their peers. Ask them about their learning regularly and support them in their enthusiasm about our topics.

Useful Websites for Year 1

Maths/English games: www.topmarks.co.uk

Maths/English games: www.ictgames.com

Free online books: www.magickeys.com

Phonics games: www.phonicsplay.co.uk

Homework

Each half-term, the children will be given a topic based homework map and spellings which will be stuck in their yellow homework book. The homework map contains a number of projects covering different aspects of their focus topic. These tasks may be posters, writing, D&T/Art or research projects. They should complete one task per week, in whichever order they choose, and hand their homework book in every **Wednesday**. Please check that your child is completing their homework. If you need another copy, please email your class teacher.

Reading

It is expected that children will read at least three times a week at home with their parents, although the more frequently you can read with them the better! We ask that parents sign the reading record book after they have heard their child read. Books will be exchanged only if your child can talk clearly and confidently about the book, and read fluently. Sitting down with your child for 5-10mins, asking questions about the text and discussing unfamiliar words will improve their comprehension greatly.

Phonics

We follow the FFT Programme for phonics which involves teaching synthetic phonics. We use phonics actions and alliteration alongside this scheme.

GPC	Phonics Phrase
/s/	'The snake slides and slithers.'
/a/	'Alphie asks for apples.'
/t/	'Tap the tall tower.'
/p/	'Peek at the proud parrot.'
/i/	'Imagine itchy insects.'
/n/	'Ned is near the net.'
/m/	'The man marches on mountains.'
/d/	'Don't disturb the dinosaur.'
/g/	'The girl is glad.'
/o/	'The octopus observes olives.'
/c/	'The curly caterpillar crawls.'
/k/	'The kangaroo keeps kicking.'
/ck/	'The chick pecks.'
/e/	'Every elephant enters.'
/u/	'The upside-down umbrella is unusual.'
/r/	'The rapid rabbit races.'
/h/	'The happy horse hops.'
/b/	'Bat before the ball.'
/f/	'The floppy flower falls.'
/ff/	'Huff and puff.'
/l/	'The long leg leaps.'
/ll/	'Bill is ill.'
/ss/	'Less mess, Jess.'
/j/	'Jane jumps for joy.'
/v/	'The vulture veers over valleys.'
/w/	'Watch the worm wiggle.'
/x/	'The excited fox exercises.'
/y/	'Yank the yellow yo-yo.'
/z/	'Zip the zig-zag zip.'
/zz/	'The fuzzy bee buzzes.'
/qu/	'The queen is quite quiet.'
/ch/	'The chipmunk chooses cheese.'

GPC	Phonics Phrase
/sh/	'Sherry shines her shoes.'
/th/	'Theo has a thimble on his thumb.'
/ng/	'Bring the king a ring.'
/ai/	'Train in the rain.'
/ee/	'See the tree?'
/igh/	'Bright light.'
/oa/	'Gost in a boat.'
/oo/	'Zoom to the moon.'
/oo/	'Look at the book.'
/ar/	'Start the car.'
/or/	'Corn for the horse.'
/ur/	'Purple turtle.'
/ow/	'Brown cow.'
/oi/	'Noisy boiling water.'
/ear/	'Near and dear.'
/air/	'Air on hair.'
/ure/	'Sure cure.'
/er/	'Bigger batter.'
/ay/	'May I play?'
/ou/	'Shout it out.'
/ie/	'Tie your tie.'
/ea/	'Time for tea.'
/oy/	'Boy with a toy.'
/ir/	'Girl in a whirl.'
/ue/	'Blue glue.'
/aw/	'I saw a see-saw.'
/ew/	'New stew.'
/a_e/	'Bake a cake.'
/e_e/	'Athlete Pete competes.'
/i_e/	'In a while crocodile.'
/o_e/	'Phone home.'
/u_e/	'Huge cube.'
/-y/	'Silly, happy puppy.'
/-yl/	'Fly in the sky.'
/ow/	'Blow the snow.'
soft c	'City mice on ice.'
soft g	'Large badge.'
/ire/	'Vampire for hire.'
/are/	'Share and care.'
/tch/	'Stretch and catch.'
/oe/	'Joe's toe.'
/ph/	'A pheasant takes a photo with his phone.'

Your child will be taught phonics for 30 minutes daily. During the month of June, all children will take the phonics screening check which is a statutory reading check. The check is designed to assess if each child has reached the age-appropriate standard of reading/decoding by the end of Year 1. Throughout Year 1, additional resources will be sent home alongside your child's home reading book to help support your child with their decoding and blending of words. These resources will also help prepare your child for the phonics screening check at the end of Year 1. Please note it is an expectation of parents, in accordance with the home-school agreement, to support your child with reading on a regular basis.

You can access free phonics resources online and some useful websites include:

<https://www.oxfordowl.co.uk/>

<http://www.ictgames.com/literacy.html>

<https://www.phonicsplay.co.uk/>



Volunteers - If any parents could spare some time to help hear readers at school, please let their teacher know or email the Year 1 Lead via primaryreception@theroyal.school . This would involve completing a DBS check by the school and signing a confidentiality form.

Rewards and Sanctions

There are many reward systems currently in place:

House Points

House points can be awarded for good work, homework and displaying the school values. At the end of the week, the house points are added up and the winning house is announced in assembly. Pupils will achieve points for their house and not on an individual basis. Throughout the year there are various house events where pupils can compete to gain house trophies/cups which are awarded at the school's Prize Day in the summer term.

Merit Awards

Merit awards are given out on an individual basis for work that is above and beyond the expected. This could be for an outstanding piece of classwork/homework, showing great improvement, working well together as a team or during paired work, showing empathy and courtesy towards others. Stickers will be issued and merits will be recorded onto the School management system. Parents should receive notification of merits through the Schoolcomms app.

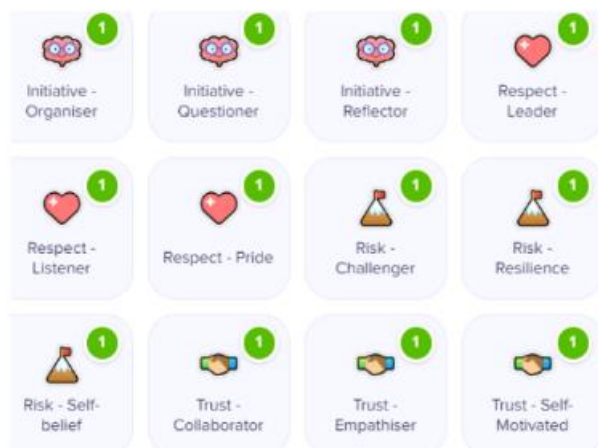
25 merits – pupils will receive a merit badge

50 merits – bronze award achieved

75 merits - silver award achieved

100 merits– gold award achieved

Dojo



Dojo points are awarded when values and learning behaviours are displayed. They link to the school values above. When children receive 20 dojos they will achieve a merit.

Sanctions

Whilst we do not expect to have cases of poor behaviour, we do have a policy that will be adhered to by pupils and staff.

Classroom rules will be displayed in every room and pupils will be made aware of the rules. Pupils that continue to disrupt lessons will be:

- Spoken to and given a handy hint to remind them of their behaviour
- A conversation regarding the learning behaviours that they are not demonstrating
- Given time to reflect and have a restorative conversation with an appropriate member of staff

Reports and Parents Evening

Reports are shared at parents evening each term. The first two reports are interim reports with a full report at the end of the year.

There will be a parents' evening every term allowing you to be kept up to date with your child's progress.



Trips

School trips are not only fun but help bring the curriculum to life. They provide deeper subject learning and increase self-confidence. Research has shown that school trips can enhance teamwork, social skills, and helps pupils to develop risk awareness.

There will be at least one school trip or workshop within school each term and examples of previous experiences include:

- Theatre trips
- Attwell Farm
- Carnival Day
- VR Experience



On occasion parents may be asked to help supervise pupils on a trip so that we can adhere to the strict staff: pupil ratios. If you are willing to help, please let the form teacher know.

All monies for trips and visiting workshops will be paid for online via the school app SchoolComms/Gateway.



Improving ATTENDANCE

At The Royal School Wolverhampton Mrs. Dhanda is the Primary Attendance Officer. You will see her out on the gates in the morning and in the reception foyer after 8:30am. If your child is late then they must be brought to Primary reception by a grown up. Miss. Vlckova is the Senior Attendance Officer.

When a child is absent from school, they can miss out on these vital opportunities and their learning, personal development and friendships may suffer.

Absence from School			
Children are required to attend school for 180 days each year at The Royal.			
Attendance during one school year	Equals days absent	Equates to weekly absence	Equates to number of lessons missed
95%	9	1.8	54
90%	18	3.6	108
85%	27	5.4	162
80%	36	7.2	216

Medical Appointments

- If your child has a medical appointment please send into school proof of appointment.
- School requires at least 48 hours notice prior to any appointments.
- If your child is unwell you can inform us by sending a message through School Gateway by 8.25am each day.
- Routine dental checks need to be arranged after school or during school holidays.

Emergency appointments only.

**ATTENDANCE
MATTERS**
All day, every day



Attendance Policy

Any absence that is not authorised by the school is a reason for concern.



Term Dates

At The Royal School you can find our school term dates on our website. When booking holidays please refer to these dates to avoid a fine.



Leave of Absence

If you require time off during term time you will need to complete a Leave of Absence Form at least 2 weeks prior to any leave.



**The Royal School, Wolverhampton
Penn Road
Wolverhampton
WV3 0EG**

**Primary Head: Mrs Kathy Jefferson
Phone: 01902 349100
Email: primaryreception@theroyal.school
Website: www.theroyal.school**



The Royal School

Wolverhampton